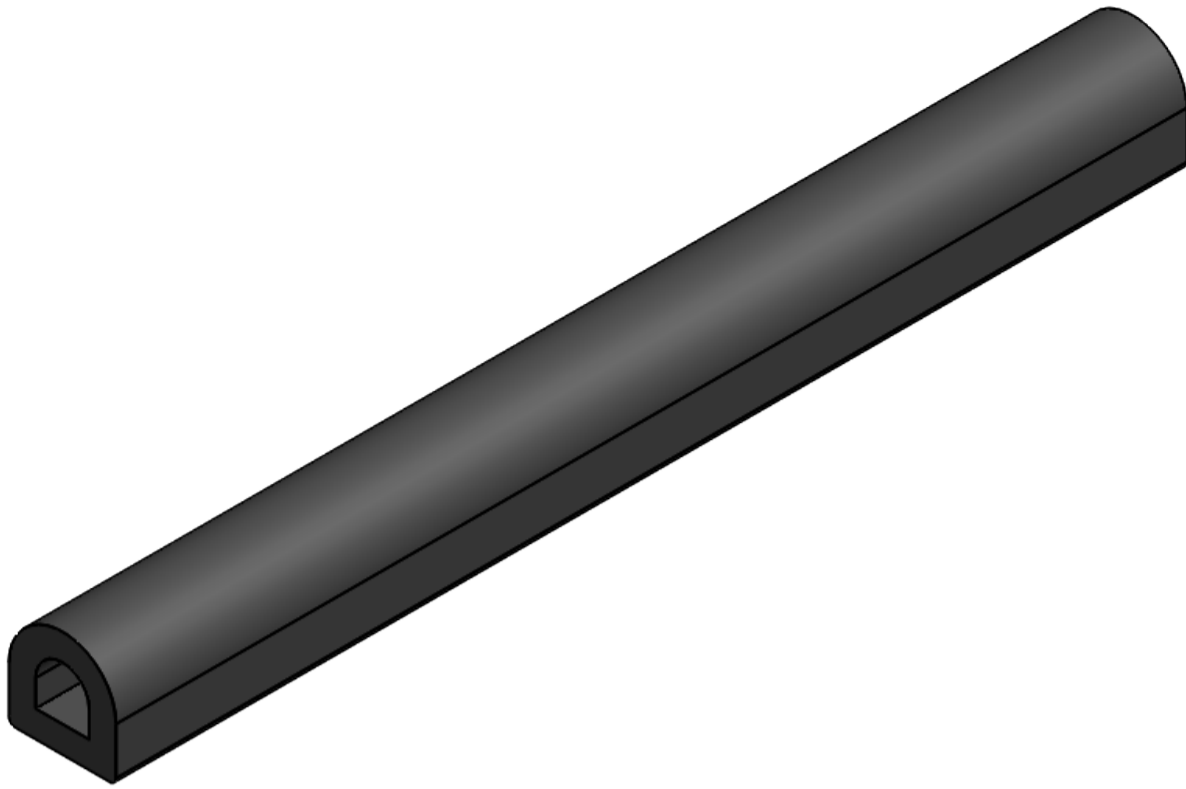


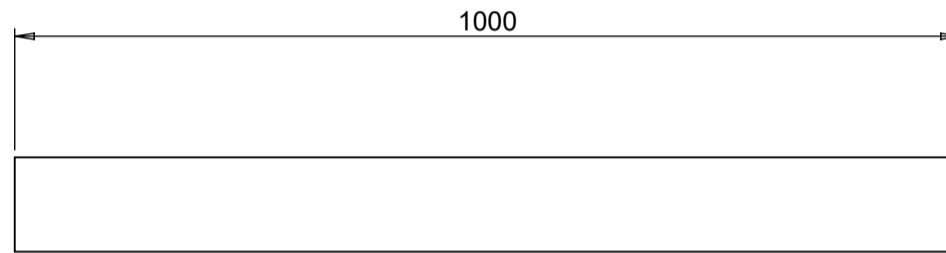
## PART No: TWB-E-100-1

Dock Bumpers reduce damage to loading docks, equipment and buildings caused by vehicle impact. D-Section Bumpers can be assembled end-to-end for long runs and be provided with mitred ends for corners if required.

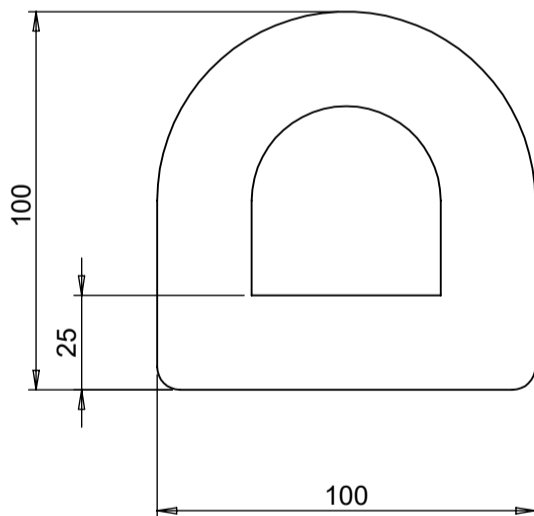
MATERIAL	Rubber
WEIGHT	10Kg
OPTIONAL EXTRAS	TWB-EST Additional fixing strip TWB-F1 12mm dia. x 135mm long fixing for concrete



Please Note: Bumpers can be supplied in alternative lengths, with holes to suit your requirements. Please contact us for further information.



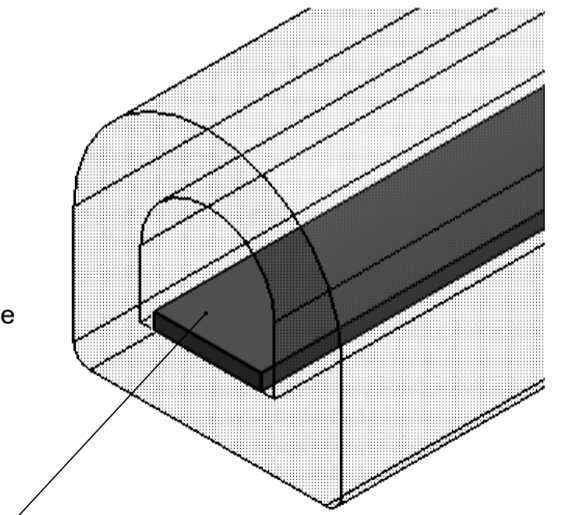
This bumper does not include any fixing holes. Please contact us for further information if fixing holes are required.



**OPTIONAL: Steel fixing strip.**

A strip of steel, the same length as the bumper. Fits into the hollow in the centre of the bumper, and provides a more secure fixing for heavy duty / heavy traffic applications. Effectively fixes all the back of the bumper, not just the area around the fixings.

Model: TWB-EST-1  
(Sold separately)



All dimensions shown are in millimetres and are intended for reference purposes only; exact product measurements may vary due to applied tolerances and methods of manufacture

The Intellectual Property, Design Patents, Copyright and Commercial Rights of this drawing remain the private property of Thorworld Industries Ltd and may not be copied, replicated or used by any Third Parties without prior written approval.



Telephone: +44 (0) 1246 260981

Email: [info@thorworld.co.uk](mailto:info@thorworld.co.uk)